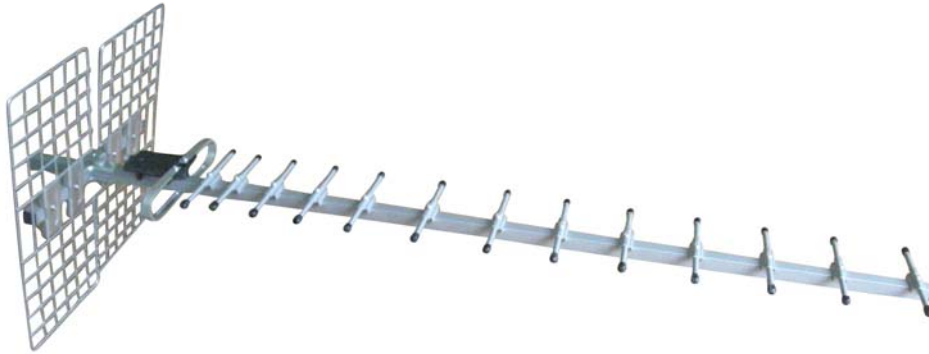




長 宏 科 技 有 限 公 司
Chang Hong Information Co., Ltd.

GSM 900/1800 MHz YAGI 24dBi+RG58(20m)+FME JACK

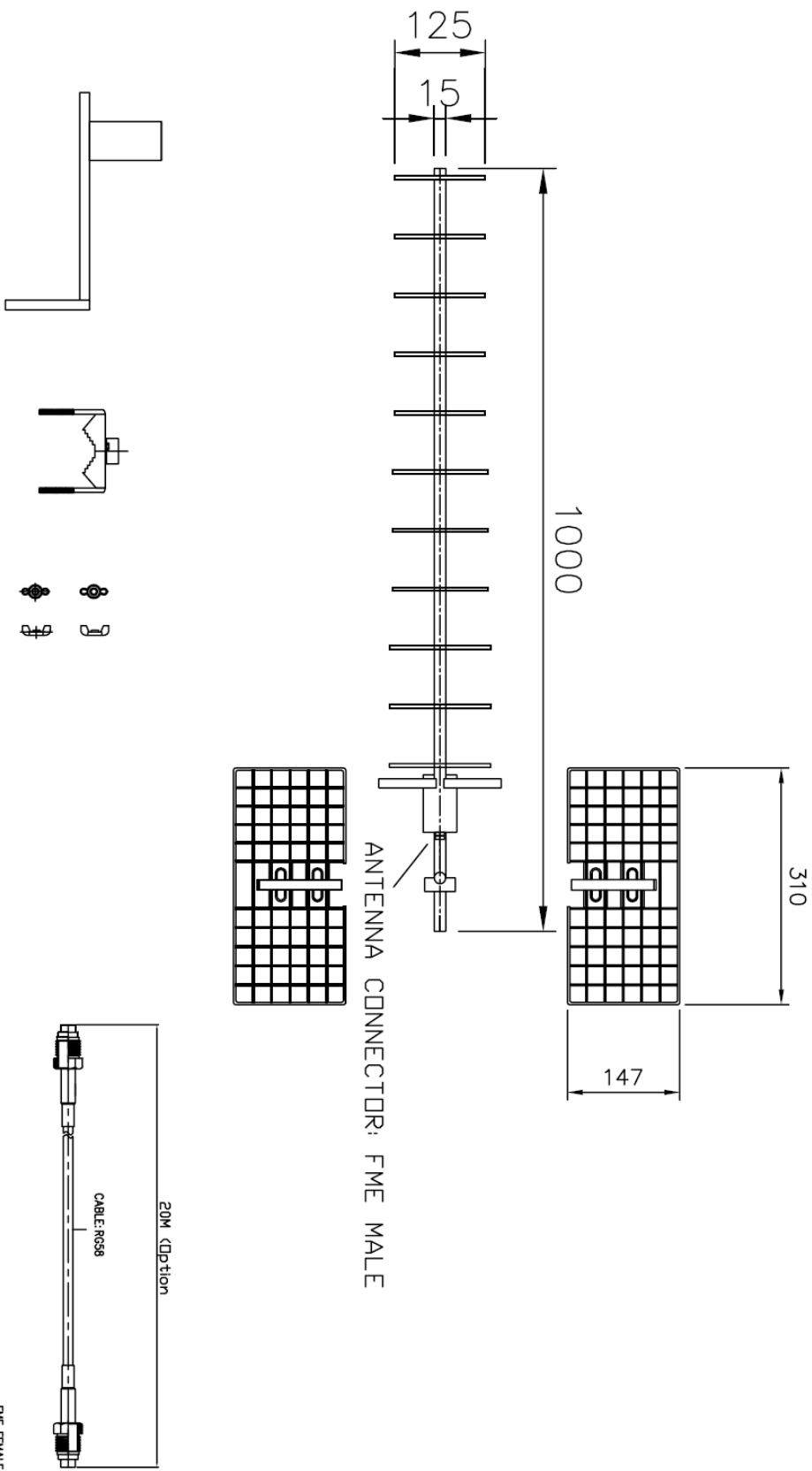
ROHS



Specification	
Model No.	GSM-24
Frequency	900/1800 MHz
Antenna Type	YAGI
Gain (dBi)	24 dBi
Polarization	Vertical
VSWR	≤ 1.5
Antenna Connector	FME FEMALE
Cable Assembly	FME FEMALE+RG58+FME FEMALE(Option) L=20M (Option)
Power Handling	100 W
Size	L1000xW300XH300 mm

GSM-24

GSM 900/1800 MHz YAGI 24dBi+RG58(20M)+FME JACK

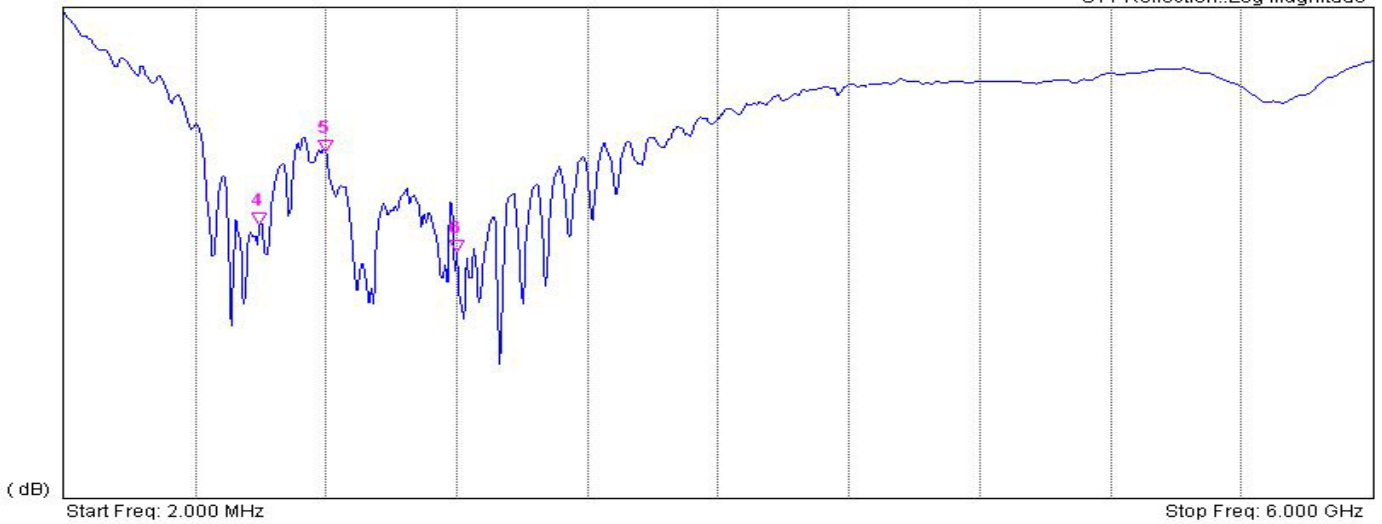


1	FREQUENCY RANGE : 900/1800 MHz	7	LENGTH : L1000×W/300×H300 mm
2	GAIN : 24 dBi	8	CABLE ASSEMBLY : FME FEMALE+RG58+FME FEMALE(Option) L=20M(Option)
3	TYPE : YAGI	9	
4	POWER HANDLING : 100W	10	
5	POLARIZATION : LINEAR VERTICAL	11	
6	VSWR : < 1.5	12	

VNA Measurement Data
 Captured (2008/4/30 下午 12:45:13)

VNA

S11 Reflection::Log Magnitude



Mkr	Ref	Delta	Ref Freq	Ref Amp	Delta Freq	Delta Amp
1	<input type="checkbox"/>	<input type="checkbox"/>	--	--	--	--
2	<input type="checkbox"/>	<input type="checkbox"/>	--	--	--	--
3	<input type="checkbox"/>	<input type="checkbox"/>	--	--	--	--
4	<input checked="" type="checkbox"/>	<input type="checkbox"/>	896.2473 MHz	22.11 dB	--	--
5	<input checked="" type="checkbox"/>	<input type="checkbox"/>	1.2016 GHz	14.70 dB	--	--
6	<input checked="" type="checkbox"/>	<input type="checkbox"/>	1.8014 GHz	24.88 dB	--	--

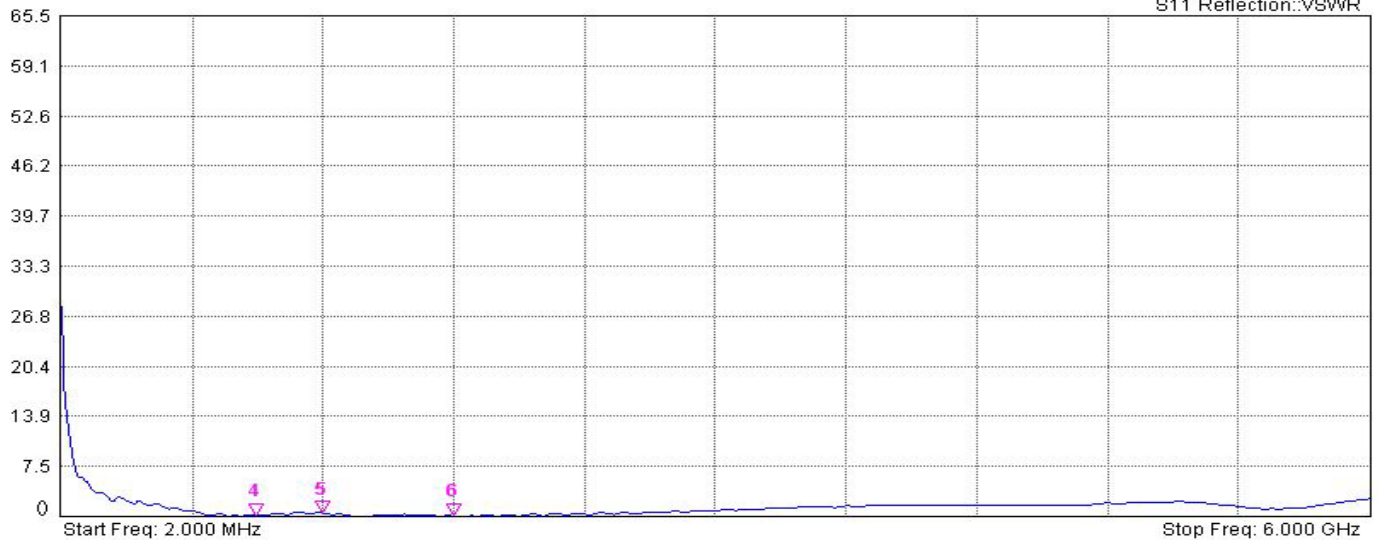
Measurement Parameters

Calibration Status	On	Serial Number	651009
Data Points	551	Base Ver.	V1.48
Output Power	High	App Ver.	V1.48
Start Frequency	2.000 MHz	Date	2008/4/30 下午 12:45:13
Stop Frequency	6.000 GHz	Device Name	

VNA Measurement Data
 Captured (2008/4/30 下午 12:45:13)

VNA

S11 Reflection::VSWR

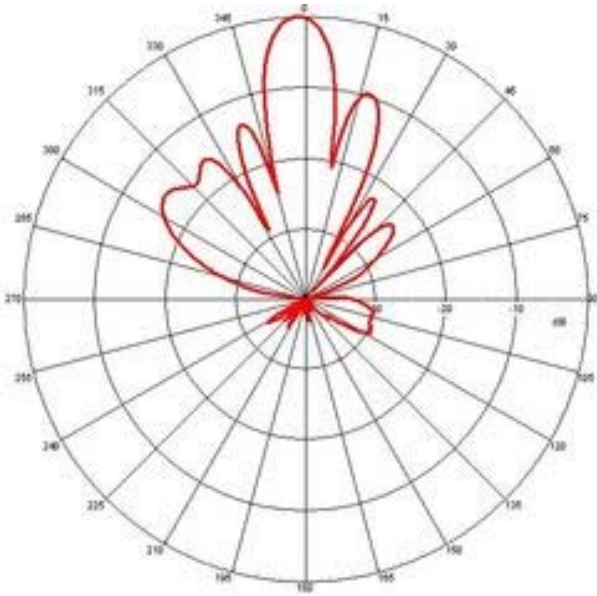


Mkr	Ref	Delta	Ref Freq	Ref Amp	Delta Freq	Delta Amp
1	<input type="checkbox"/>	<input type="checkbox"/>	--	--	--	--
2	<input type="checkbox"/>	<input type="checkbox"/>	--	--	--	--
3	<input type="checkbox"/>	<input type="checkbox"/>	--	--	--	--
4	<input checked="" type="checkbox"/>	<input type="checkbox"/>	896.2473 MHz	1.17	--	--
5	<input checked="" type="checkbox"/>	<input type="checkbox"/>	1.2016 GHz	1.45	--	--
6	<input checked="" type="checkbox"/>	<input type="checkbox"/>	1.8014 GHz	1.12	--	--

Measurement Parameters

Calibration Status	On	Serial Number	651009
Data Points	551	Base Ver.	V1.48
Output Power	High	App Ver.	V1.48
Start Frequency	2.000 MHz	Date	2008/4/30 下午 12:45:13
Stop Frequency	6.000 GHz	Device Name	

H-PLANE



E-PLANE

