

2.4-2.5GHz/5.1-5.8GHz 1dBi FOR SMA PLUG

ROHS



Specifications/Special Features :

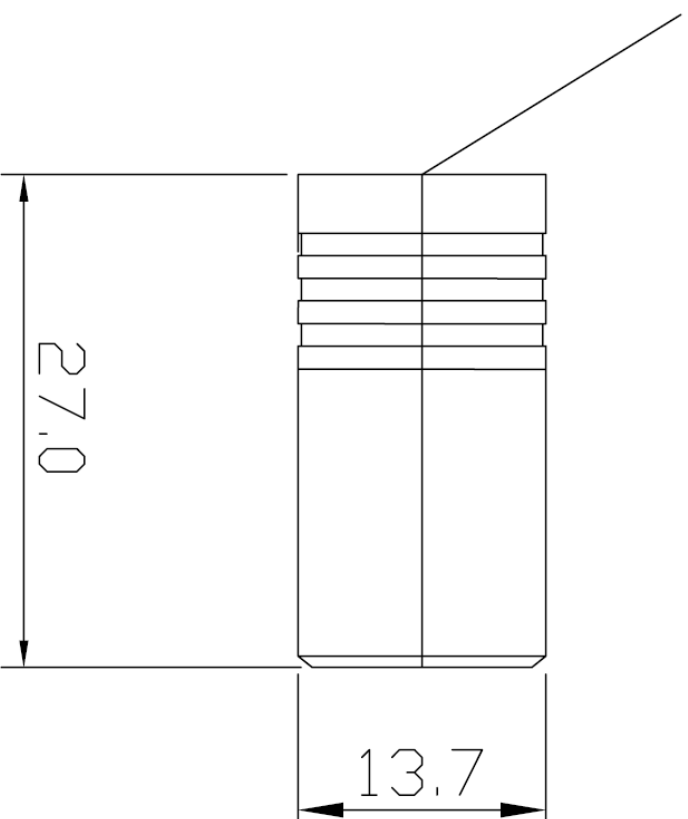
This antenna is designed for wifi
wireless Communications

Specification	
Model No.	DA-2458-11
ANTENNA CONNECTOR	SMA PLUG (Option)
Gain	1 dBi
Type	Dipole
Polarization	Linear Vertical
VSWR	$\leq 2.0 : 1$
Frequency	2400-2500/5100-5800 MHz
Weight	13g
Size	L27×W13.7×H13.7 mm
Antenna Color	black

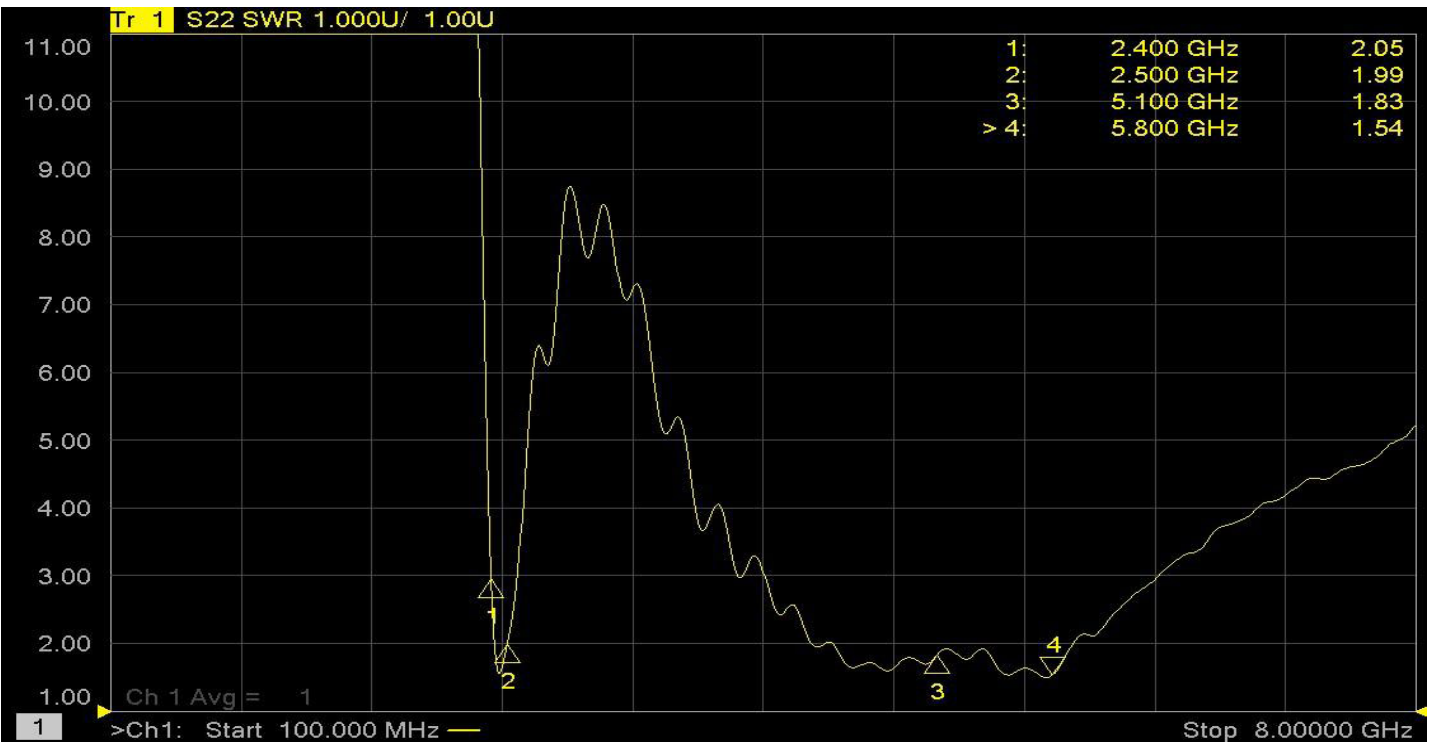
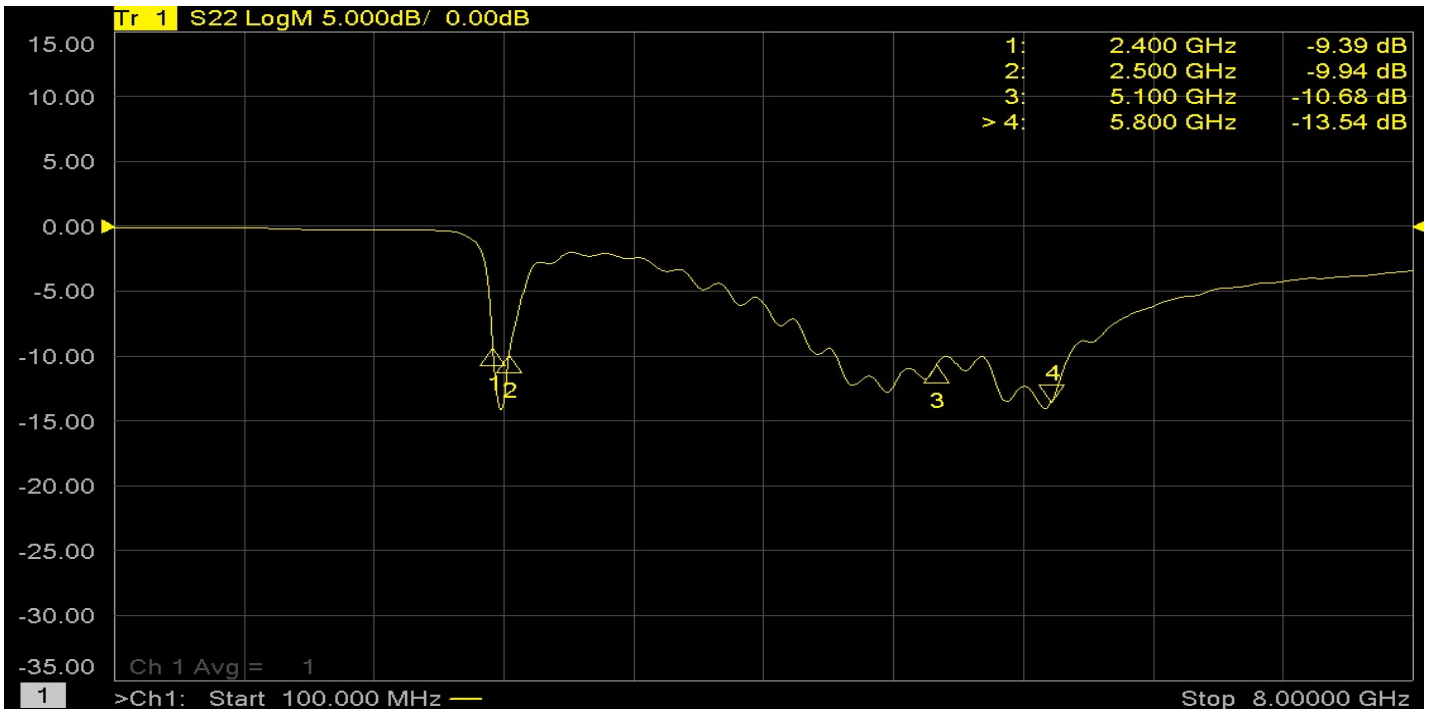
DA-2458-11-SM

2.4-2.5GHz/5.1-5.8GHz 1dBi FOR SMA PLUG

ANTENNA CONNECTOR: SMA PLUG



1	FREQUENCY : 2400-2500/5100-5800 MHz	6	IMPEDANCE : 50 Ω
2	GAIN : 1 dBi	7	
3	V.S.W.R : $\leq 2.0:1$	8	
4	LENGTH : L27xW13.7xH13.7 mm	9	
5	CONNECTOR : SMA PLUG	10	



H-PLANE

E-PLANE

