

2.4~2.5GHz Dipole 0 dBi FOR SMA PLUG

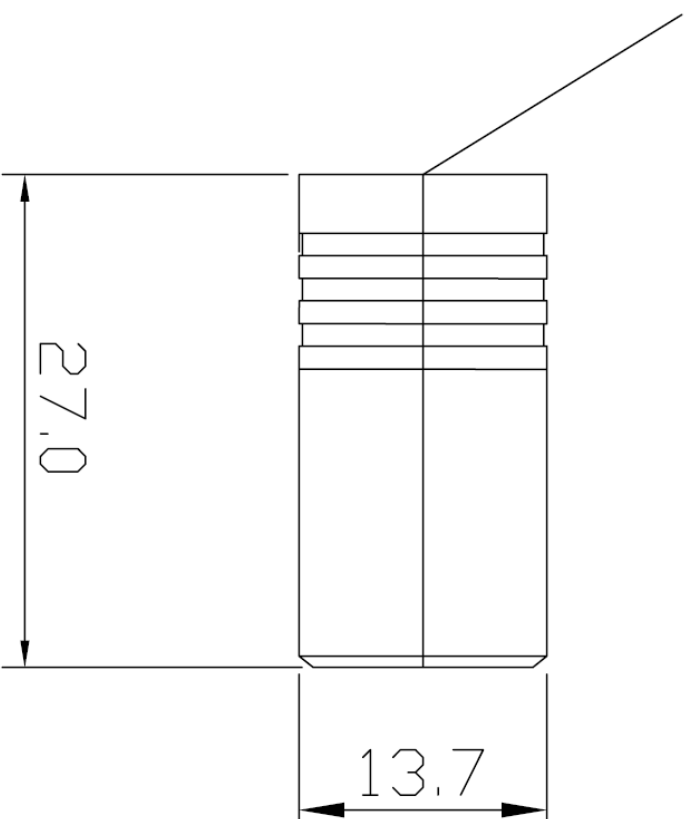


Specifications/Special Features :

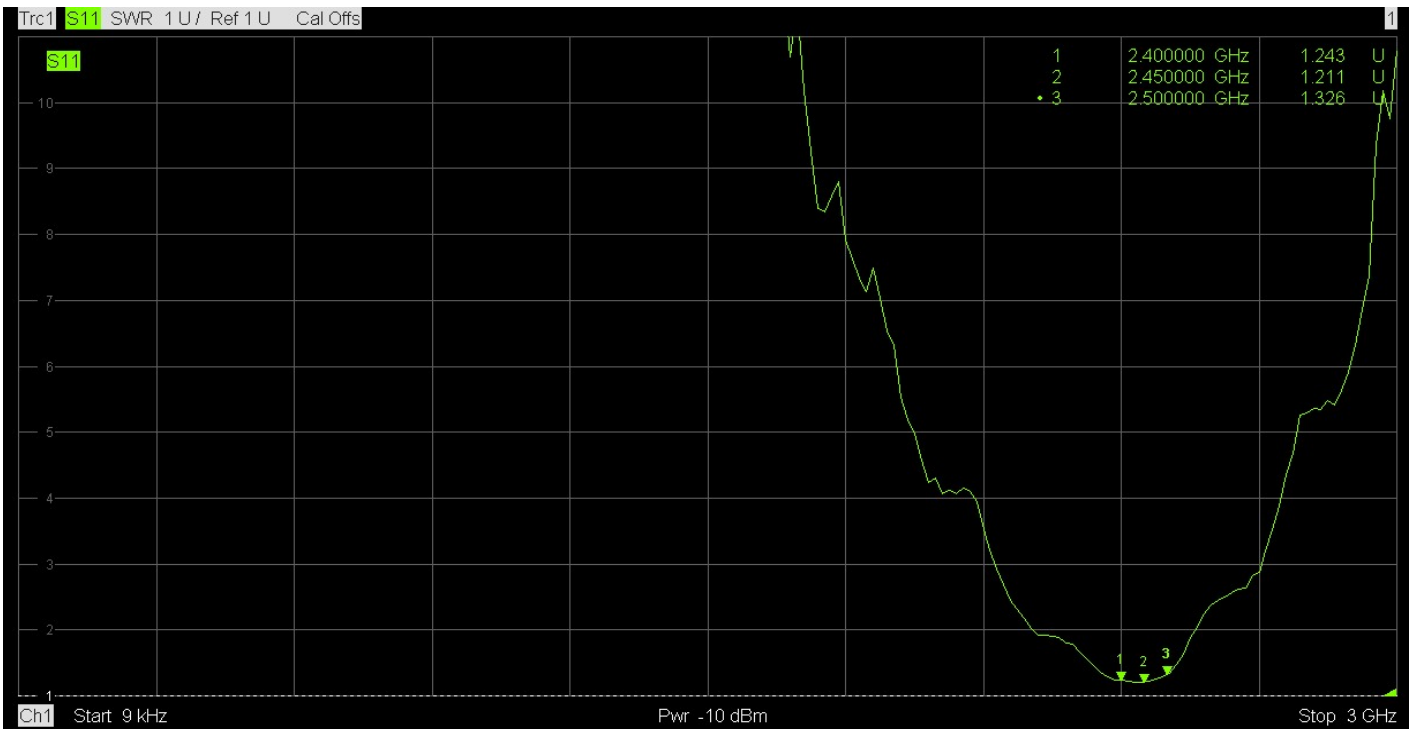
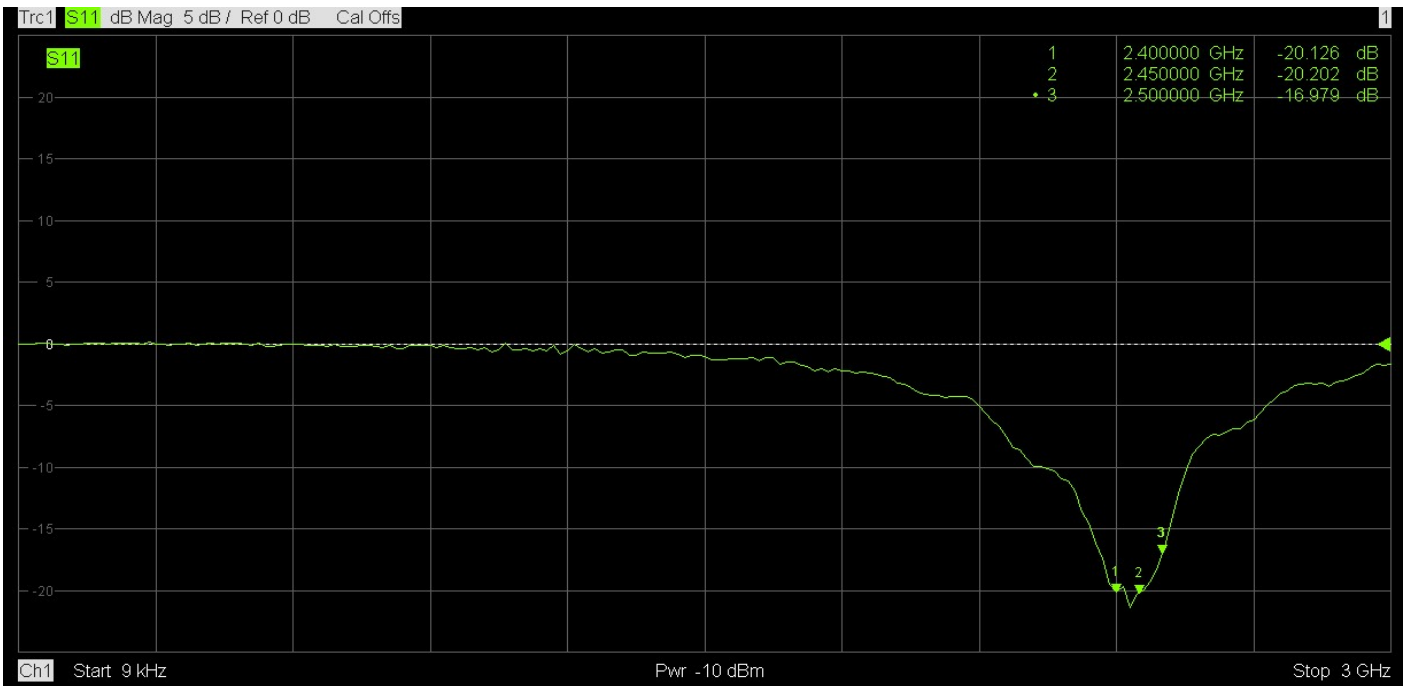
This antenna is designed for wifi
wireless Communications

Specification	
Model No.	DA-24-26
ANTENNA CONNECTOR	SMA PLUG (Option)
Gain	0 dBi
Type	Dipole
Polarization	Linear Vertical
VSWR	$\leq 1.5 : 1$
Frequency	2400~2500MHz
Weight	13g
Size	L27×W13.7×H13.7 mm
Antenna Color	black

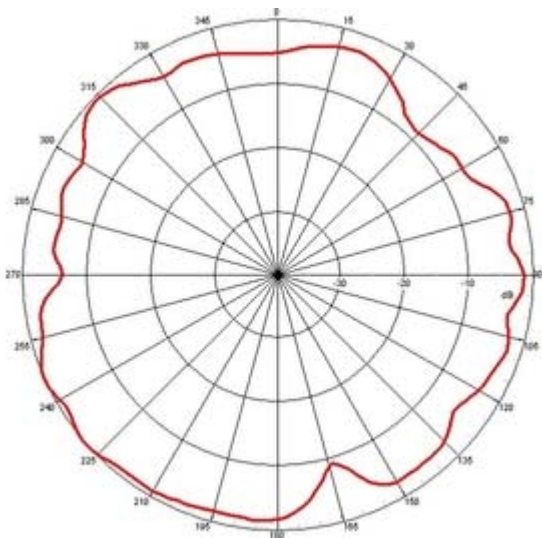
ANTENNA CONNECTOR: SMA PLUG



1	FREQUENCY : 2400-2500MHz	6	IMPEDANCE : 50 Ω
2	GAIN : 0dBi	7	
3	V.S.W.R : $\leq 1.5:1$	8	
4	LENGTH : L27xW13.7xH13.7mm	9	
5	CONNECTOR : SMA PLUG	10	



H-PLANE



E-PLANE

