



長 宏 科 技 有 限 公 司
Chang Hong Information Co., Ltd.

900/1800/1900/2100MHz 0 dBi FOR SMA PLUG



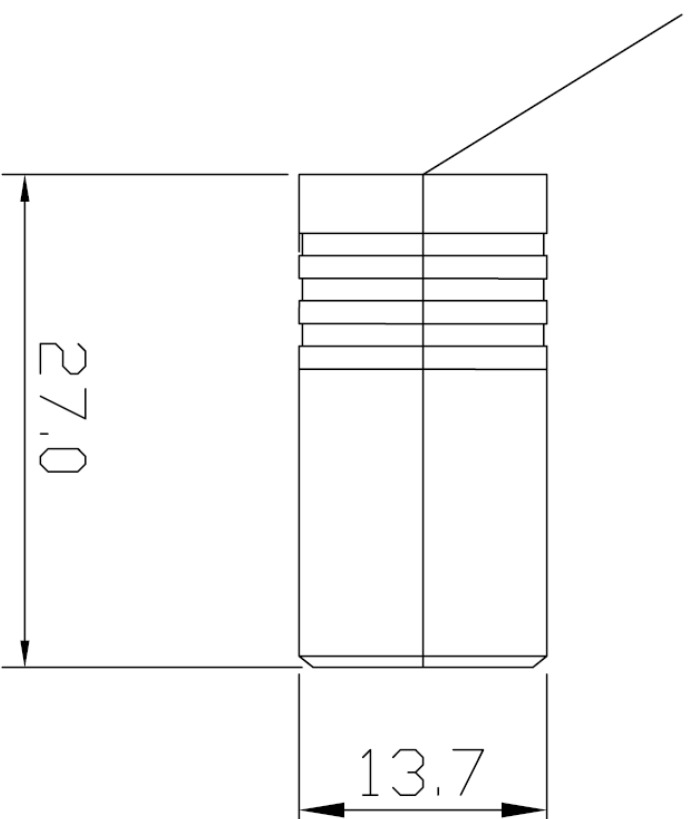
Specifications/Special Features :
Global System for Mobile Communication
900/1800/1900/2100 MHz phone antenna,
Broadband design for GSM/UMTS/WCDMA
systems.

Specification	
Model No.	GSM-40
ANTENNA CONNECTOR	SMA PLUG (Option)
Gain	0 dBi
Type	OMNI
Polarization	Linear Vertical
VSWR	$\leq 3.0 : 1$
Frequency	900/1800/1900/2100MHz
Weight	13g
Size	L27×W13.7×H13.7 mm
Antenna Color	black

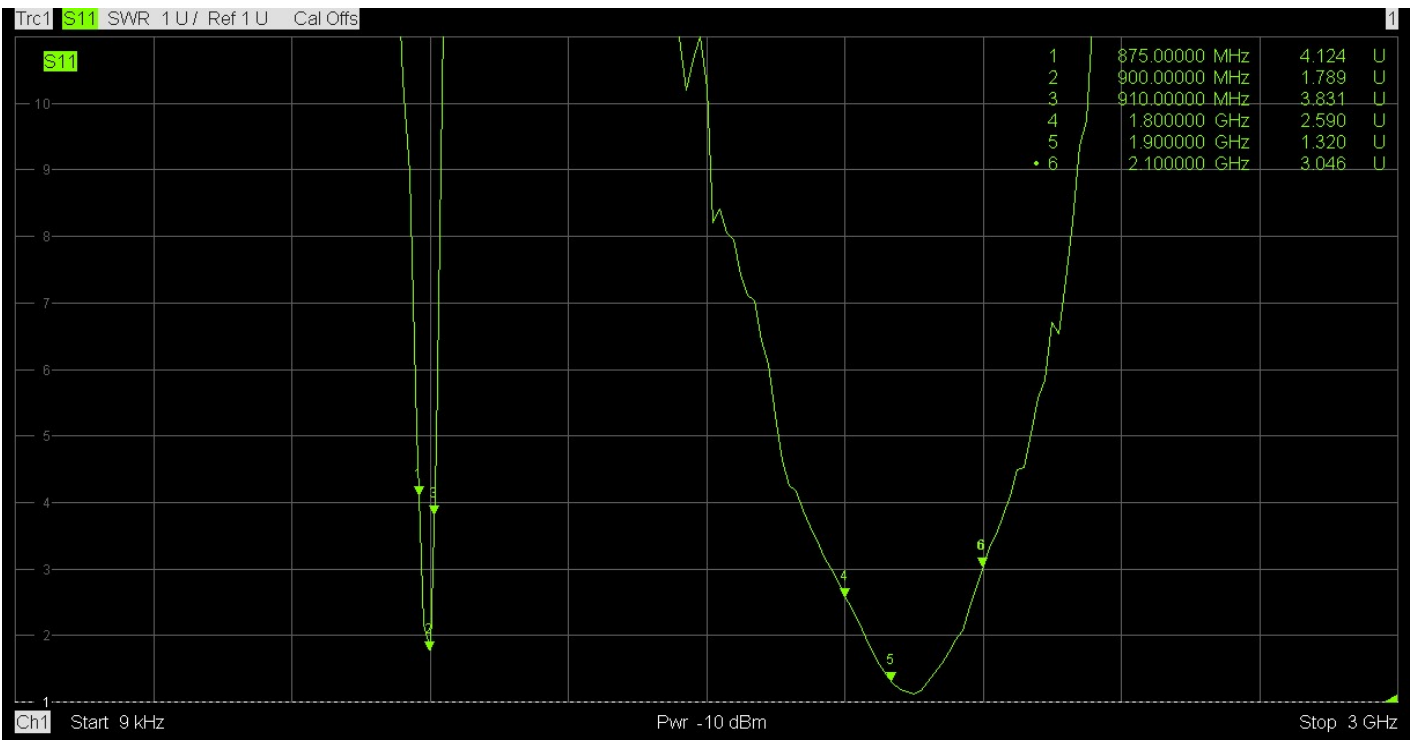
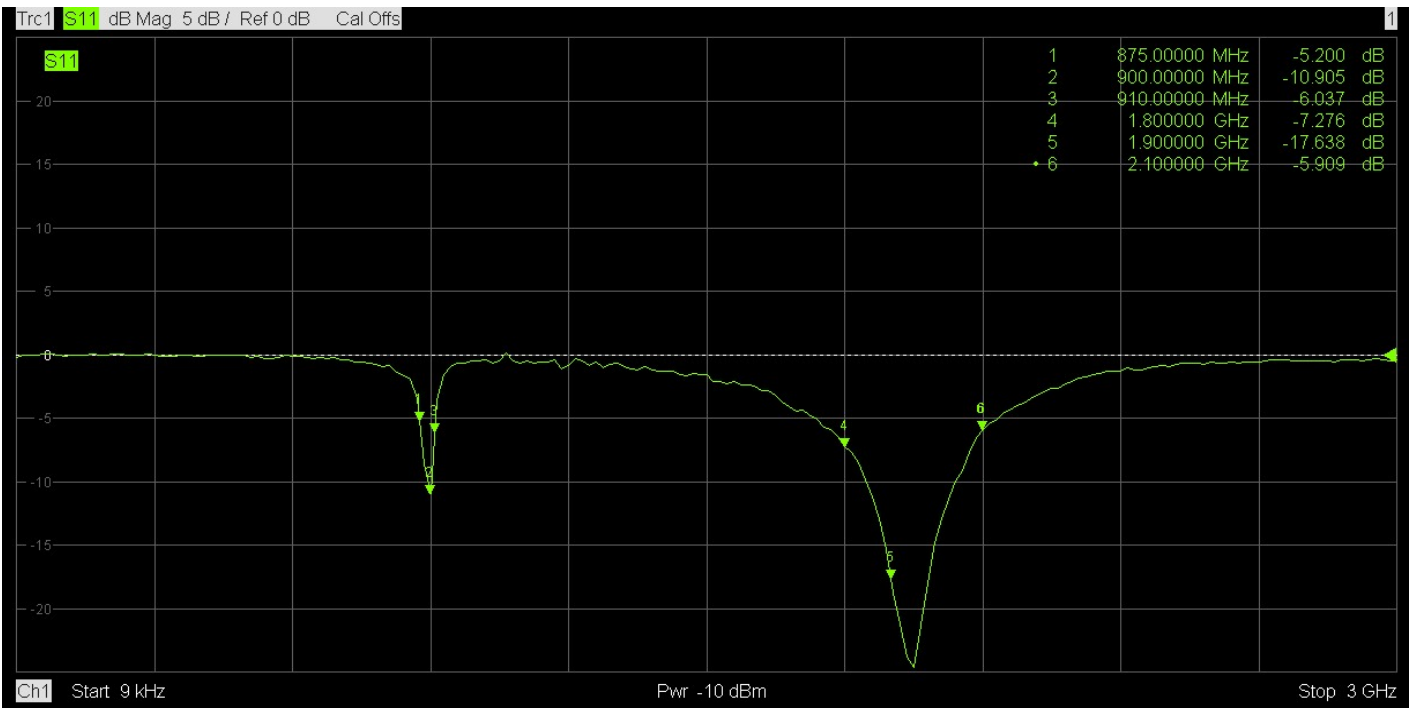
GSM-40-SM

GSM 900/1800/1900/2100MHz 0dBi FOR SMA PLUG

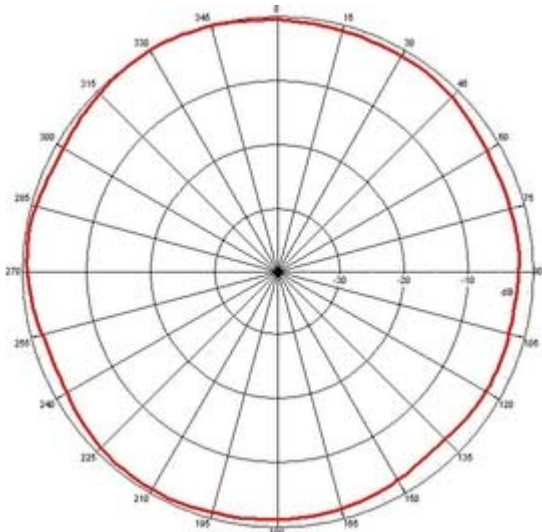
ANTENNA CONNECTOR: SMA PLUG



1	FREQUENCY : 900/1800/1900/2100 MHz	6	IMPEDANCE : 50 Ω
2	GAIN : 0dBi	7	
3	V.S.W.R : $\leq 3.0:1$	8	
4	LENGTH : L27xW13.7xH13.7 mm	9	
5	CONNECTOR : SMA PLUG	10	



H-PLANE



E-PLANE

