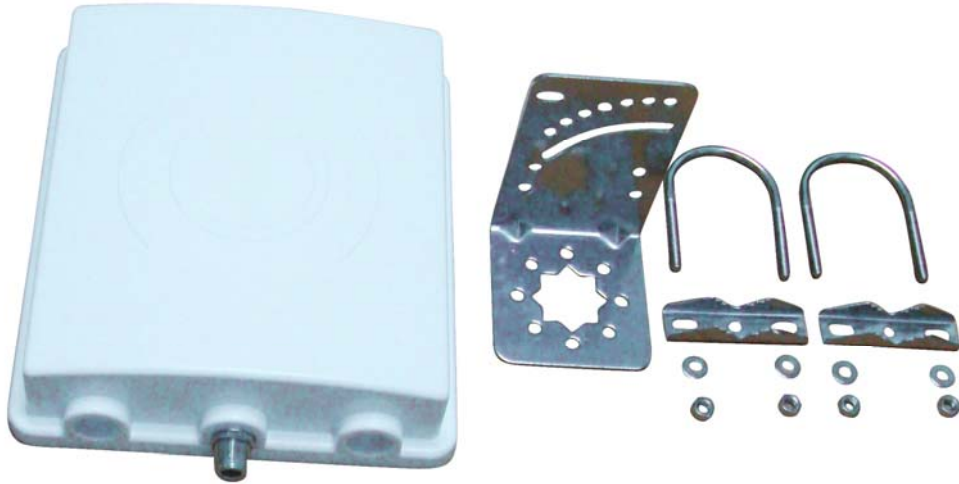


## 5.1-5.8GHz PANEL 15 dBi FOR N FEMALE



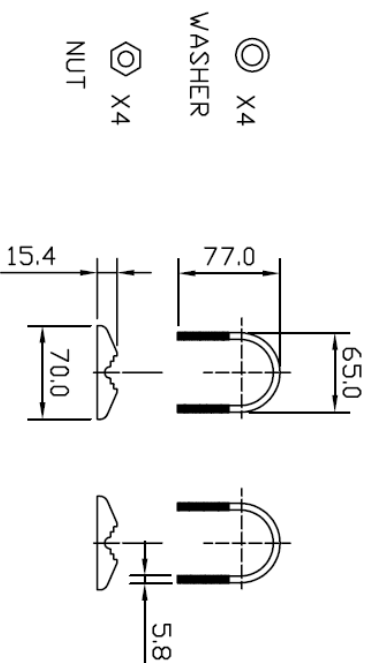
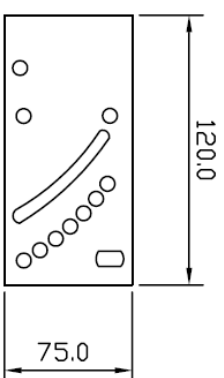
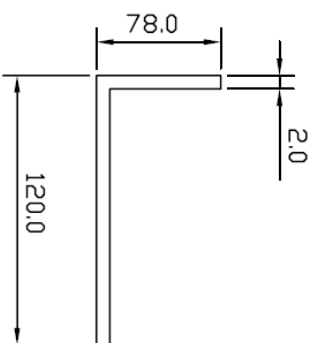
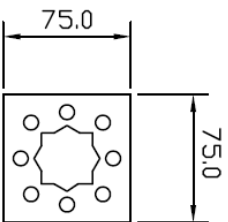
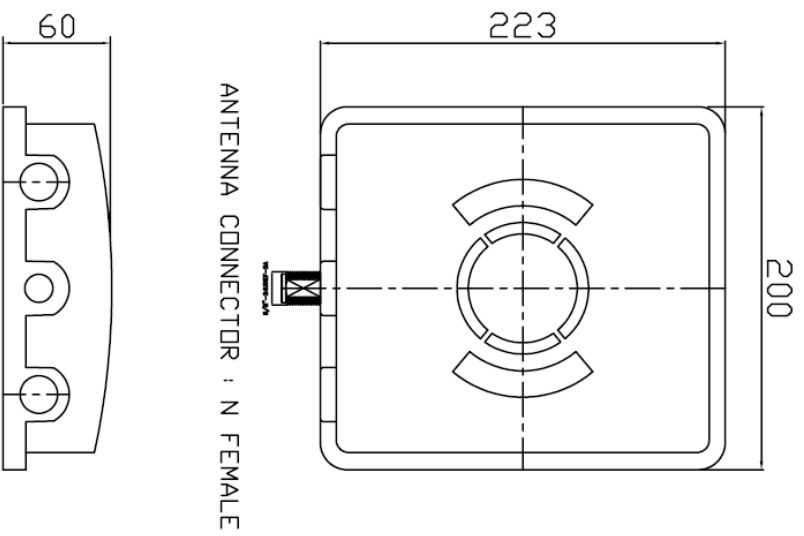
Specifications/Special Features :

This antenna is designed for wifi wireless communications

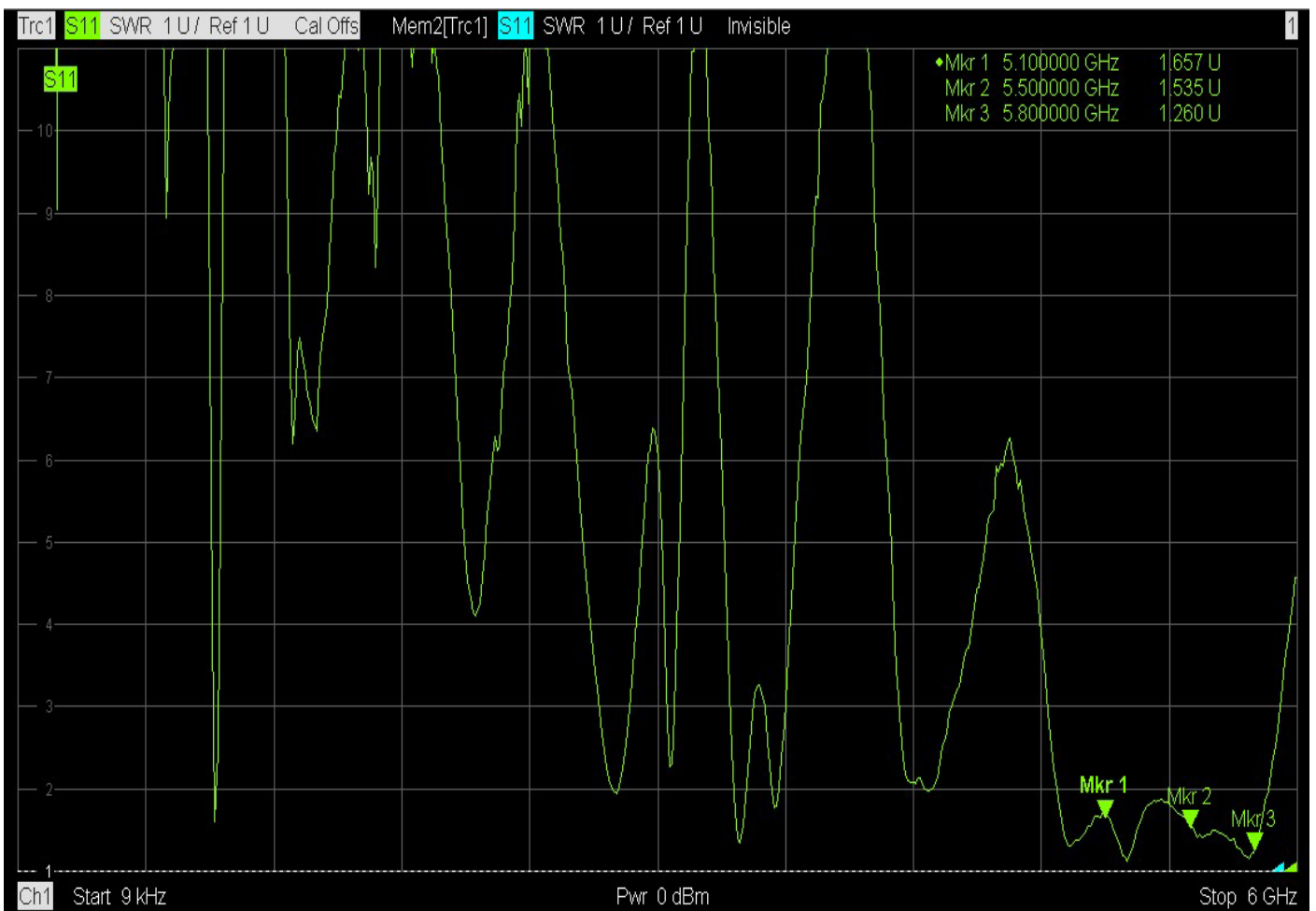
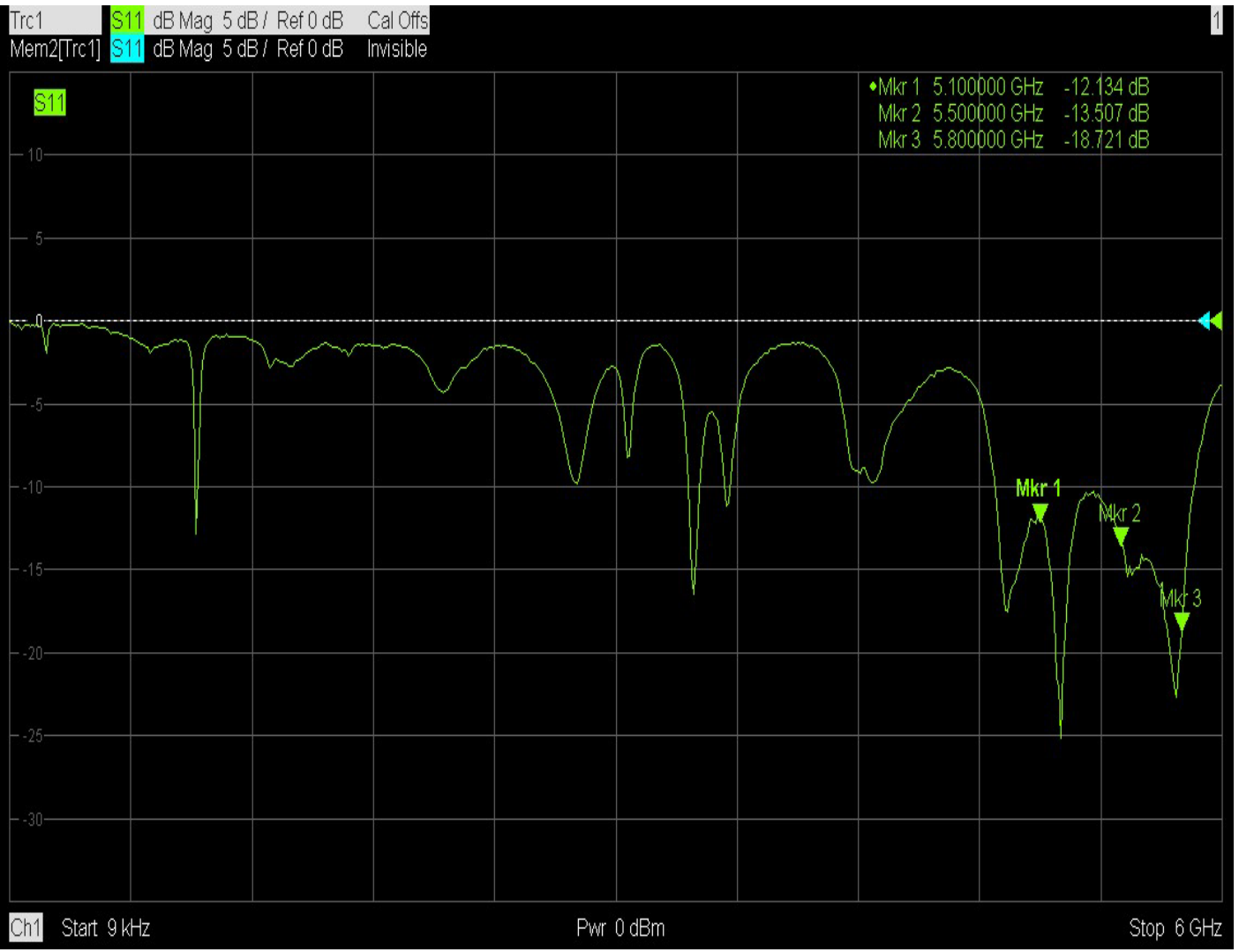
Specification	
Model No.	PA-5158-02
Frequency Range	5100~5800 MHz
Impedance	50 Ω
V.S.W.R.	<1.9
Gain	15 dBi
Maximum Power -W	100
Polarization	Vertical
Beam width deg.	Horz.25° Vert.15°
Standard Connector	N Female
Radome Material	ABS polymer (white)
Weight	1 kg
Dimensions	L223×W200×H60 mm

PA-5158-02

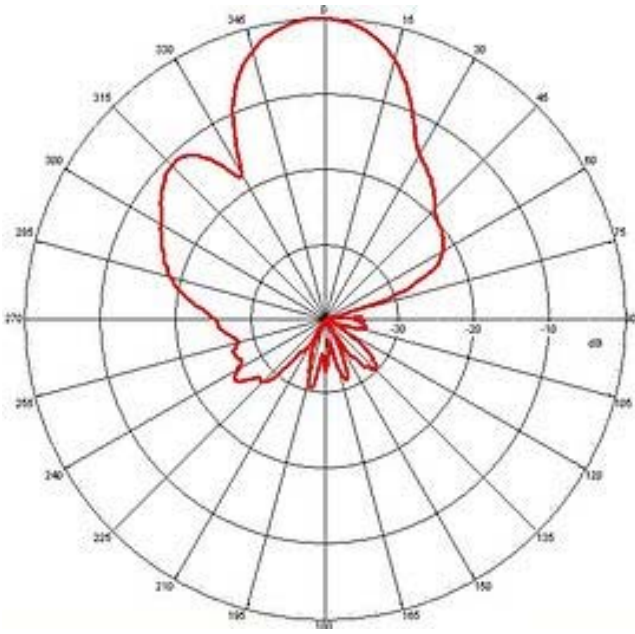
5.1-5.8 GHz PANEL 15 dBi FOR N FEMALE



1	FREQUENCY RANGE : 5100-5800 MHZ	8	Dimensions : L223XW200XH60mm
2	GAIN : 15 dBi	9	
3	VSWR : < 1.9 : 1	10	
4	IMPEDANCE : 50 Ω	11	
5	POLARIZATION : LINEAR VERTICAL	12	
6	Antenna Connector : N FEMALE	13	
7	Maximum Power : 100W		



## H-PLANE



## E-PLANE

